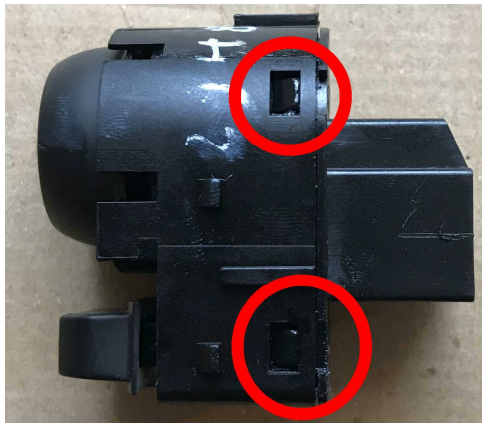


# Conversion instructions mirror switch Astra-K

**Required tools:** Small slotted screwdriver Soldering iron, solder

**All work is at your own risk!**  
**I assume no liability for damages incurred by the conversion nor for damage caused by installation or use.**

## Step 1: Open the mirror switch



To open the switch, the small noses must be clipped out (red circle), on each side there are two of them. After unclipping the two parts pull apart.

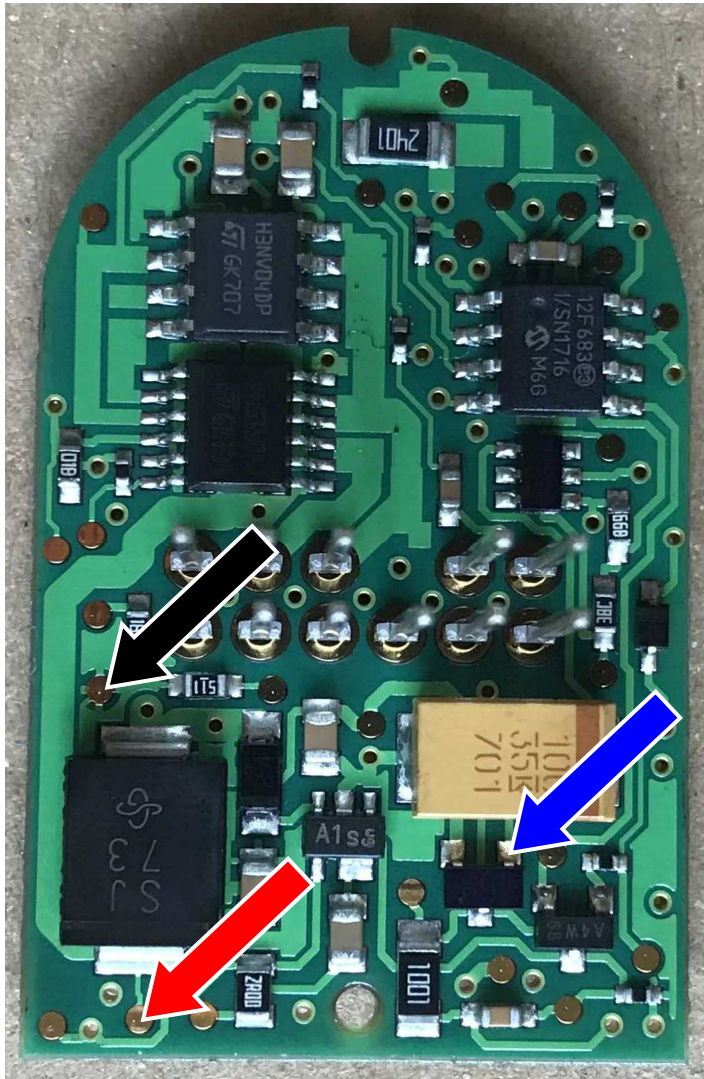
## Step 2: Drill the hole and insert the cable

A hole for the cable has to be drilled into the housing, which has been removed from the circuit board (see red circle, approx. 3.5mm). After drilling the cable through.



### Step 3: Solder the cables

The board presents itself as follows:



It must be soldered 3 cables.

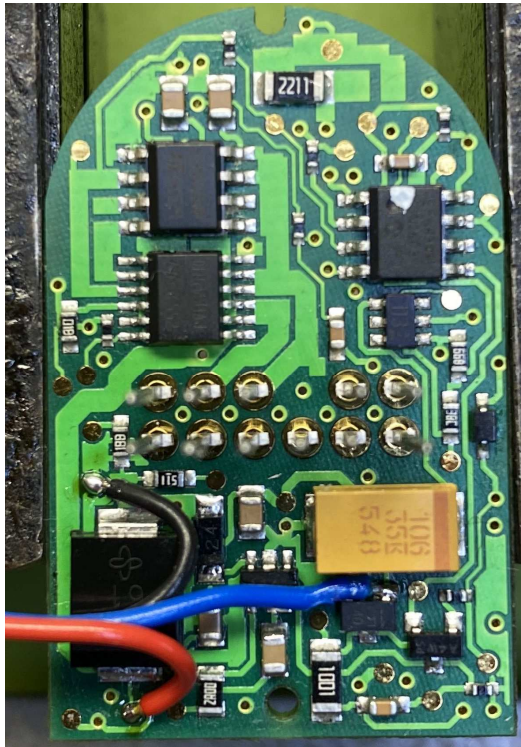
We need:

Red arrow: 12V

Black arrow: Ground

Blue arrow: Input for the folding signal (solder directly to the component!)

Now it should look like this:  
(depending on the cable used)



Replace the cap and clip the switch together.

Finally, fasten the connector to the housing.



This would complete the conversion of the mirror switch.

I hope you enjoy the replica / remodeling.